

# MORRISON PROJECT PACIFIC BOOKER MINERALS INC.

**British Columbia**



## Project Description

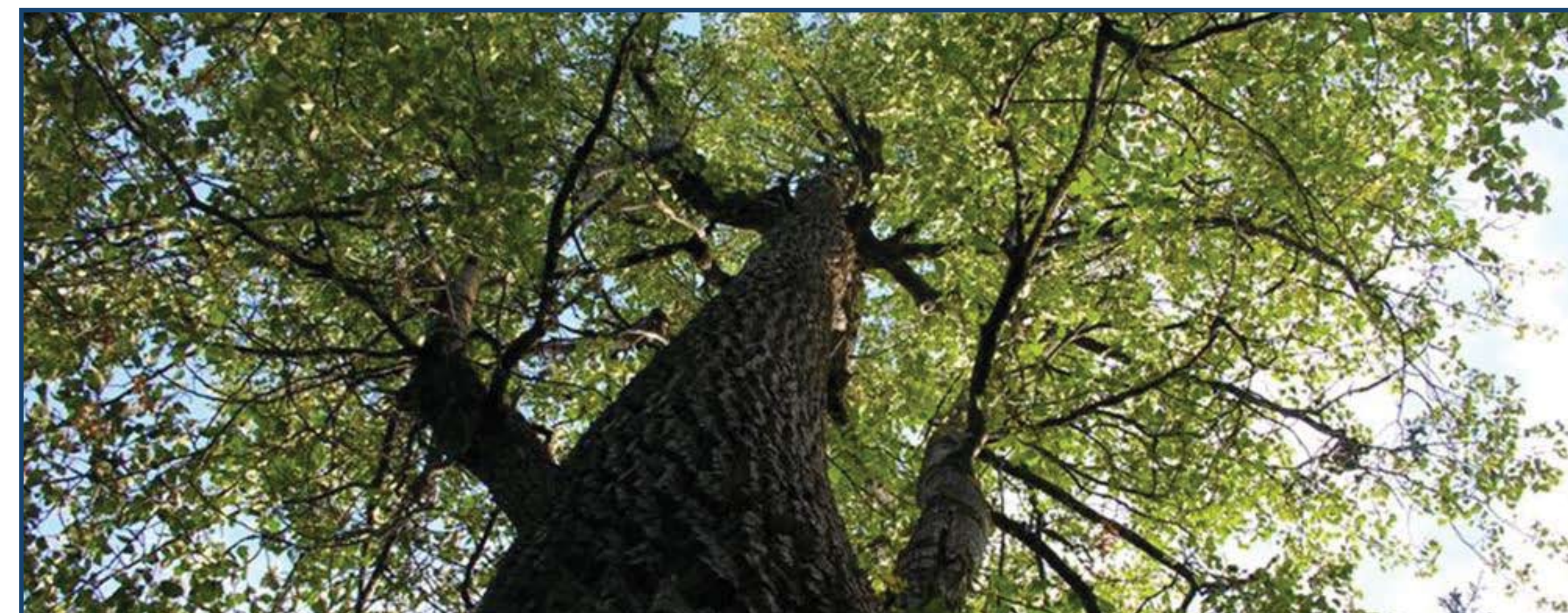
*Pacific Booker Minerals Inc.*

*Gregory R. Anderson, President and Chief Executive Officer*  
*William G. Deeks, P.Eng., Chairman of the Board, Executive Director*  
*Mark Gulbrandson, Executive Director*  
*John Plourde, Executive Director*  
*Dr. Dennis Simmons, Director*  
*Erik A. Tornquist, Executive Vice President and Chief Operating Officer*  
*William F. Webster, Executive Director*  
*Ruth Swan, Chief Financial Officer*

[www.pacificbooker.com](http://www.pacificbooker.com)

## Corporate Governance

- Management team with experience in corporate finance, resource and business development and mining
- Pacific Booker Minerals Inc (TSX-Venture BKM.V) is a publicly listed company
- 100% owner of Morrison mineral rights

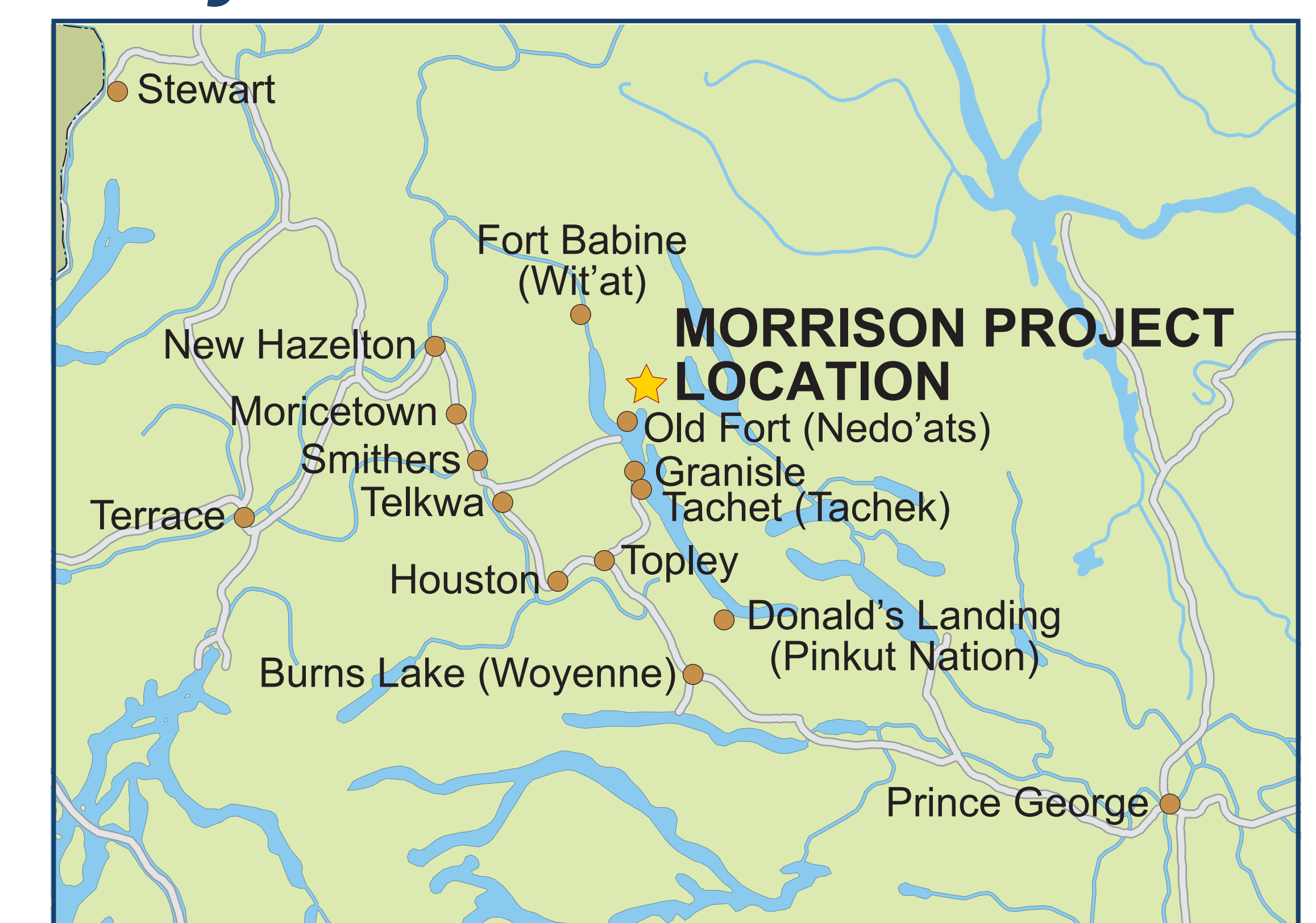


## Project History

- 1962 – 1973: Noranda Exploration discovered the Morrison deposit and drilled 95 holes totaling 13,893 m.
- 1992: Noranda estimated an inferred resource of 190 million tonnes of 0.41% copper and 0.21 g/t gold.
- 1997: Pacific Booker Minerals Inc. entered into an agreement with Noranda for a 50% interest and began exploration drilling to establish grade and continuity of copper and gold
- 2004: Pacific Booker Minerals purchased 100% interest of the Morrison property from Falconbridge Ltd. (formerly Noranda)
- 2007: NI 43-101 compliant measured/indicated resource estimate of 206,869,000 tonnes grading 0.46% copper equivalent.



## Project Location



## Morrison Project

- Advanced stage porphyry copper-gold project development 65 km north-east of Smithers, B.C.
- PBM proposes an open pit mine using conventional technology to produce copper-gold-molybdenum concentrate.
- Regional infrastructure in place
- Feasibility study to be completed late 2007.
- BC *Environmental Assessment Act* reviewable Project.



# MORRISON PROJECT PACIFIC BOOKER MINERALS INC.

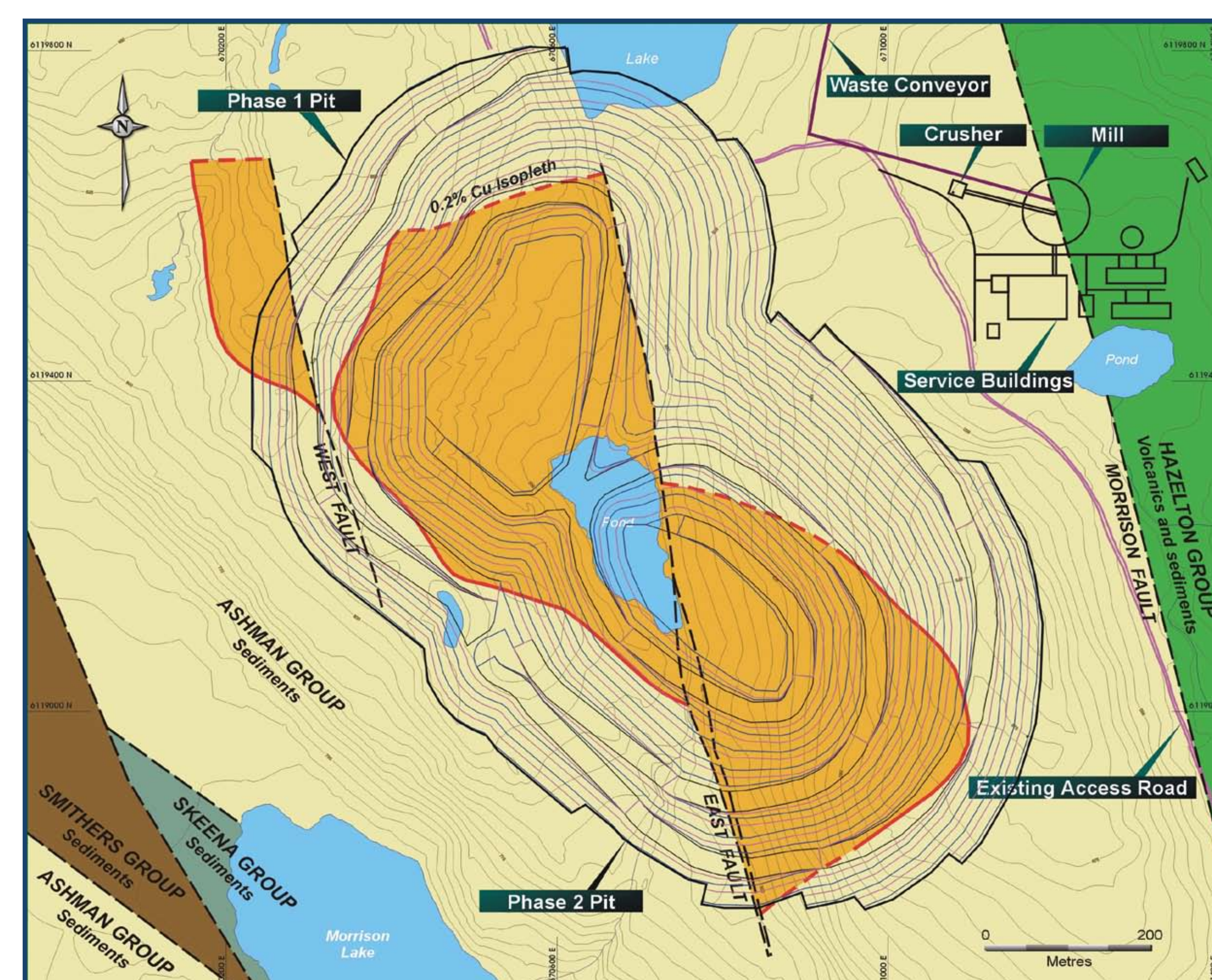
**British Columbia**



## Geology and Geotechnical Programs

### Resource Estimation

- Geological mapping
- Core logging and assaying
- Modeling and analysis
- Resource estimate is NI 43-101 compliant



### Geotechnical and Hydrogeological Programs

- Rock mechanics
- Structural analysis
- Hydrogeology and groundwater modeling
- Overburden assessments
- Pit slope stability assessment
- Site foundation assessments
- Tailings storage design



### 2007 Mineral Resource Estimation

Class	Tonnes (000's)	Average Grade				Contained Metal		
		Cu EQ (%)	Cu (%)	Au (g/t)	Mo (%)	Cu (lb) 000,000's	Au (oz) 000's	Mo (lb) 000's
Measured	96,516	0.47	0.40	0.20	0.004	851.13	614.4	8,511
Indicated	110,353	0.46	0.39	0.20	0.005	936.66	691.8	12,164
Measured/Indicated	206,869	0.46	0.39	0.20	0.005	1,787.78	1,306.30	20,676
Inferred	56,524	0.47	0.4	0.21	0.005	494.72	374.4	6,231

$Cu\ EQ = Cu + Au * 0.303 + Mo * 3.18$



# MORRISON PROJECT PACIFIC BOOKER MINERALS INC.

**British Columbia**



## Morrison Mine Description – Overview

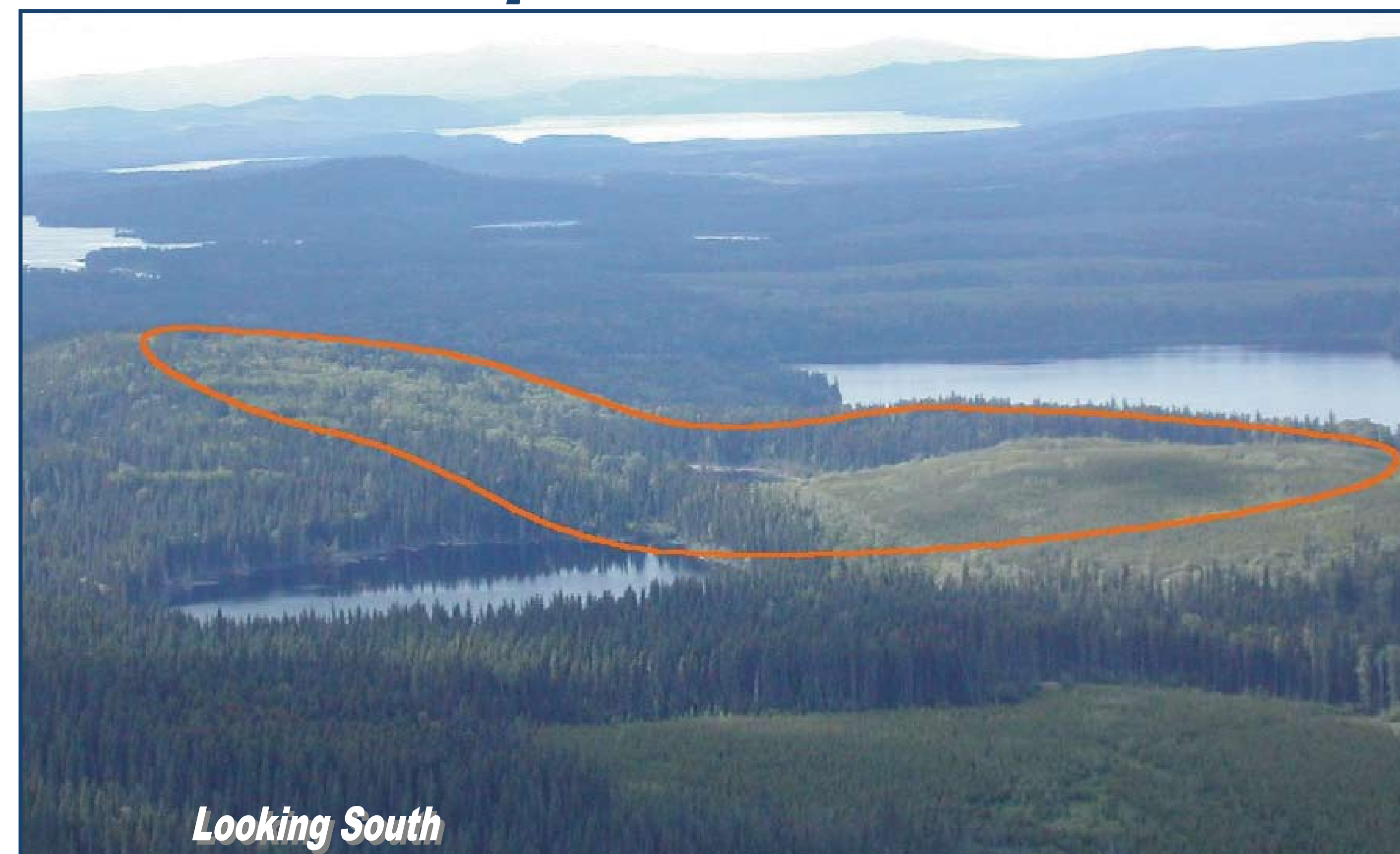
### Open Pit Mine

- Development of the open pit is planned as a two-phase mining operation utilizing conventional truck and shovel equipment.
- Mining methods will incorporate drilling, blasting, loading and haulage.
- Planned production rate is 30,000 t/d ore.



Example of an open pit mine

### Morrison Deposit



### Mine Components

- New mill and office site east of Morrison Lake
- New tailings storage facility northeast of mine site
- Processing plant producing copper/gold concentrate
- Extension of electrical power from the former Bell minesite
- Concentrate transported by truck to the port of Stewart and shipped to smelters in Asia
- Site reclamation to self-sustaining land use

### Post Mine Reclamation Objectives

- Soils suitable for reclamation that will be affected will be salvaged and stockpiled for future use
- Disturbed lands will be restored to stable hydrological function and re-vegetated to achieve a self-sustaining state to support wildlife habitat.
- Soil and vegetation metal analysis monitoring in accordance with CCME guidelines
- Conditions established to minimize future spread of invasive plants



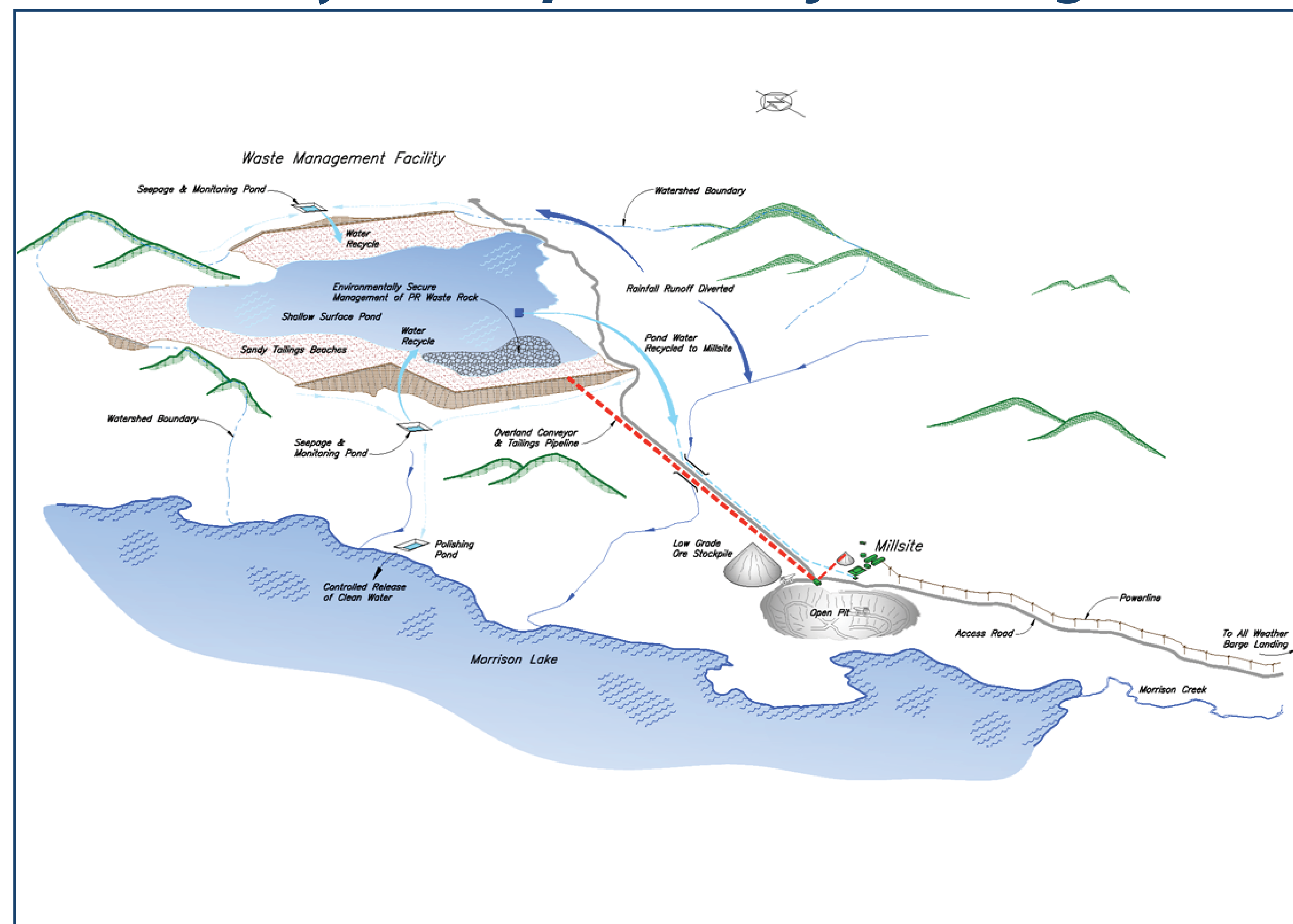
# MORRISON PROJECT PACIFIC BOOKER MINERALS INC.

British Columbia



## Morrison Mine Description – Infrastructure and Facilities

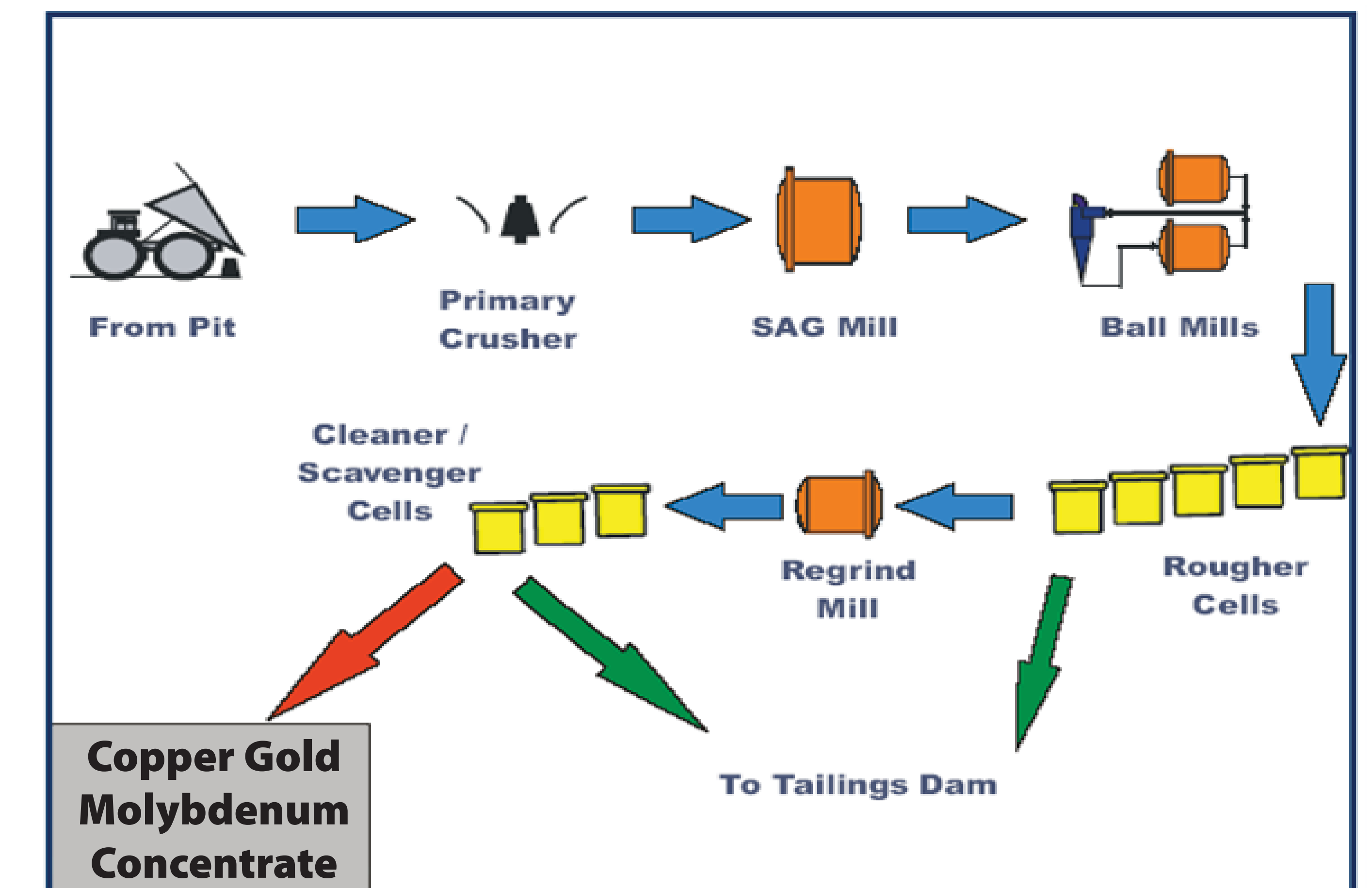
### Preliminary Conceptual Project Design



### On Site Components

- Mill building including concentrate loading
- Mine dry and office
- Maintenance shops, warehouse, rescue and first aid
- Cold storage area building
- Power substation and distribution
- Fuel storage depot
- Water and sewage treatment plants
- Security main gate
- Employee camp accommodation
- Parking lots for employees, staff and visitors and for mine vehicles
- Pipeline for tailings disposal
- Temporary facilities such as modular offices, contractor's shops and temporary laydown areas or temporary crusher for aggregate
- Explosives magazine

### Generalized Mill Flowsheet

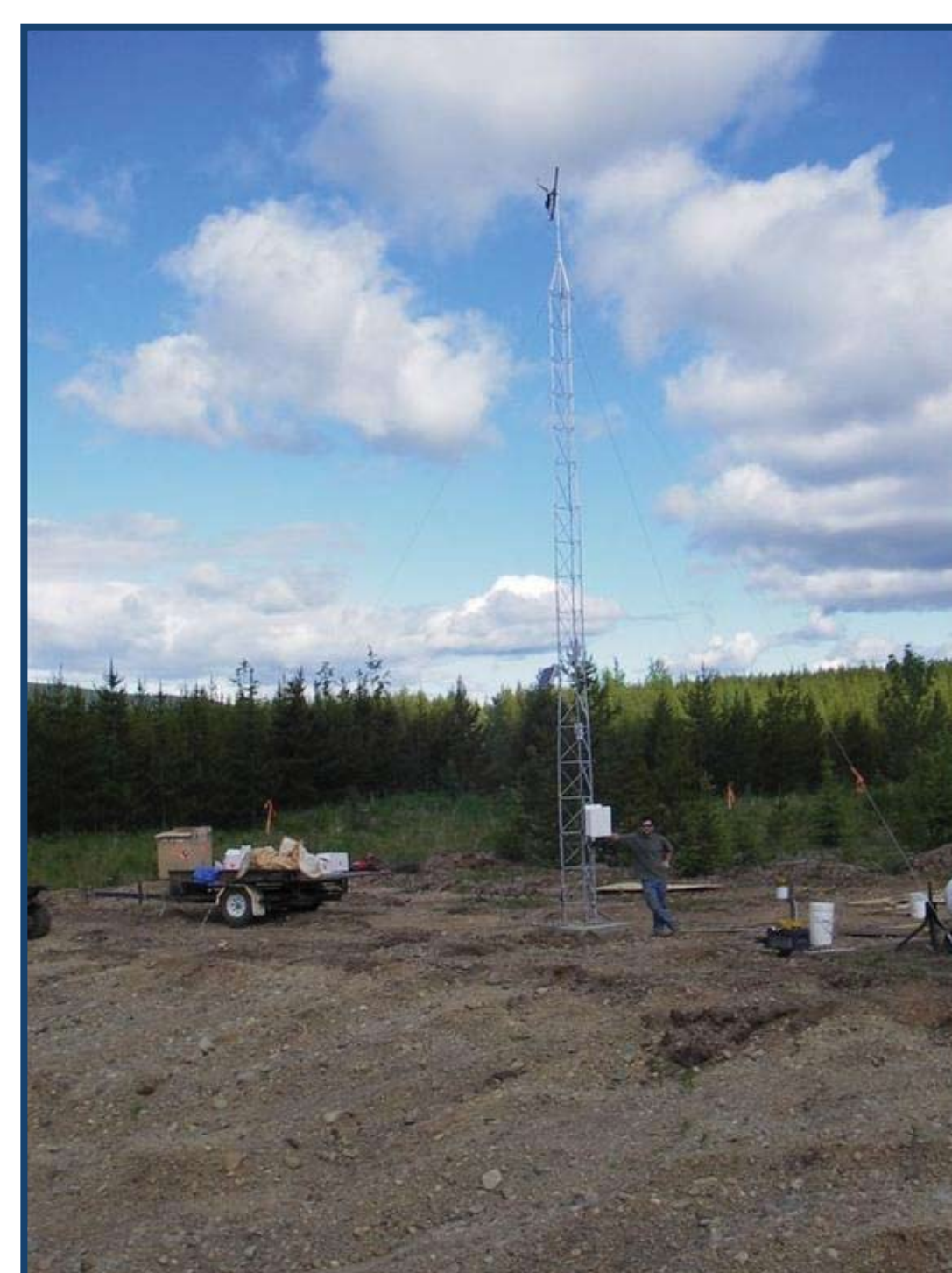
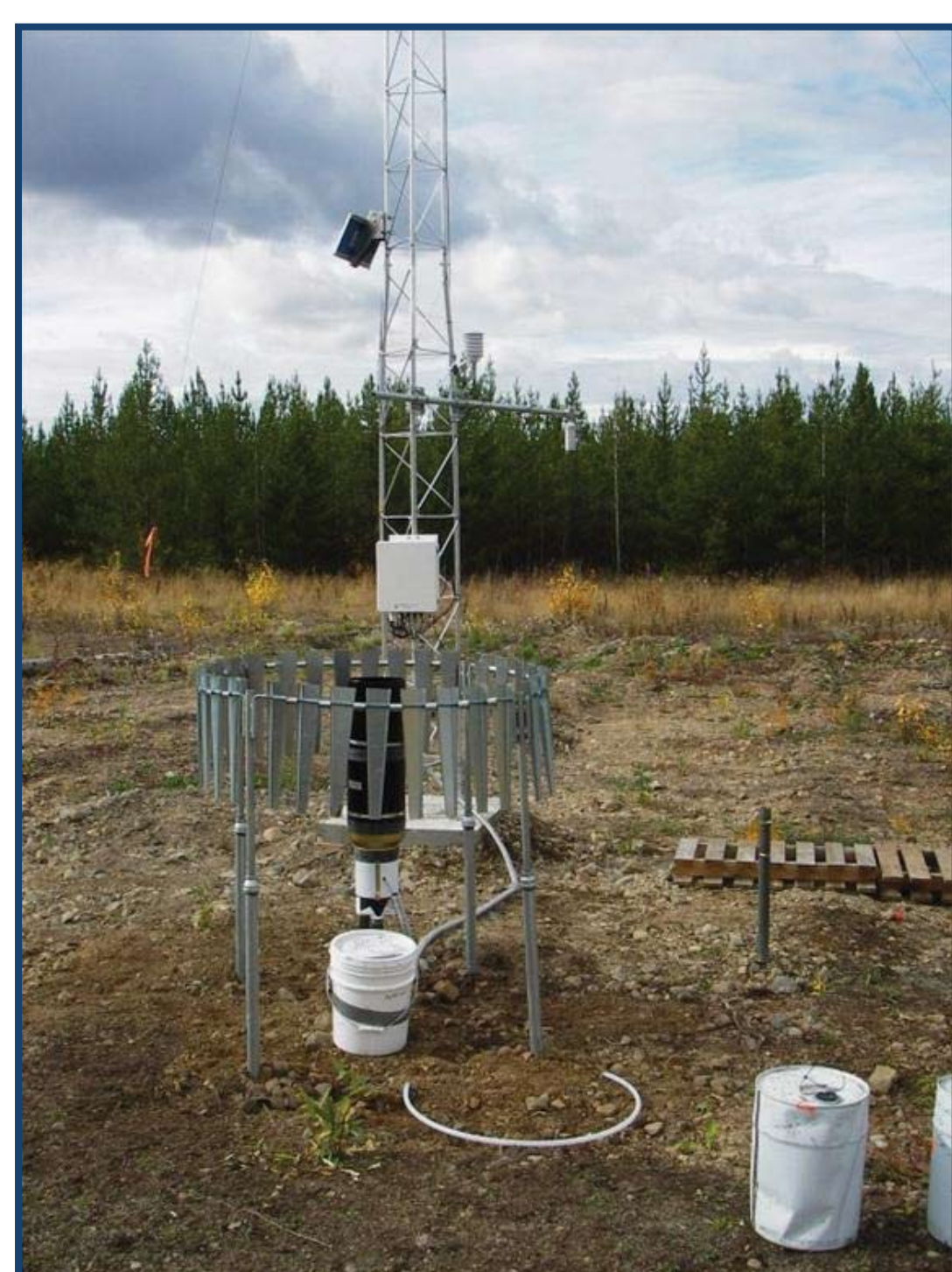


# MORRISON PROJECT PACIFIC BOOKER MINERALS INC.

British Columbia



## Environmental Baseline Programs

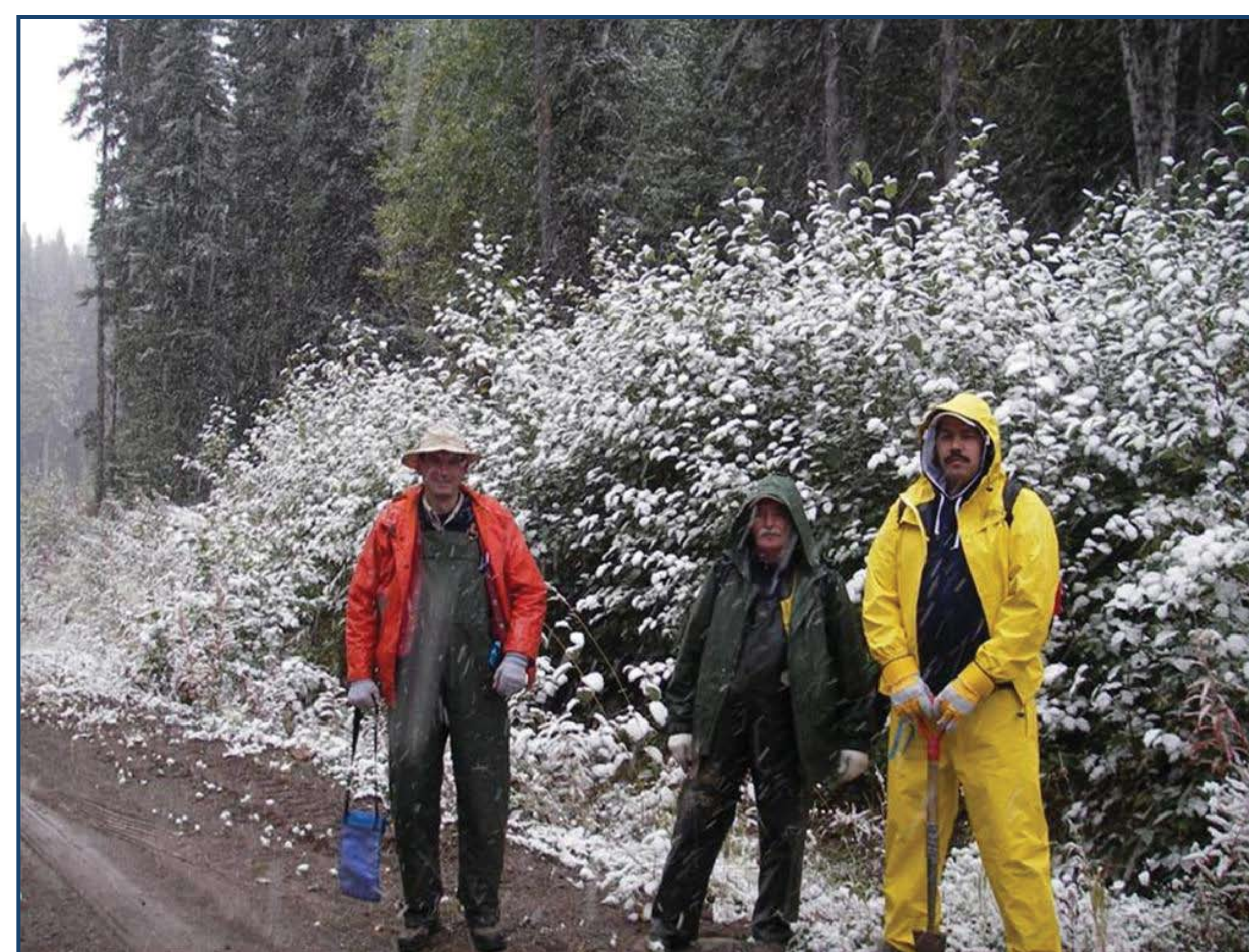


### Meteorology and Air Quality

- Weather station
  - Wind , Rain and Snow
  - Relative humidity, air temperature
- Air quality monitoring
  - Dustfall – baseline metal content in dust
- Extreme event modeling
  - Designs must respond to extreme precipitation and runoff event

### Hydrology

- Site specific hydrology program
- 5 streams with continuous data loggers
- Data analysis
- Incorporate data (regional data) from adjacent areas
- Catchment area/runoff analysis
- Data collection to continue in 2007



### Hydrogeology

- Groundwater monitoring wells
- Groundwater quality and levels monitoring
- Regional groundwater model
- Hydrogeology interaction with mining zone
- Integrated water balance and impact analysis



# MORRISON PROJECT PACIFIC BOOKER MINERALS INC.

**British Columbia**



## Environmental Baseline Programs

### Soil Survey

- Soil type, drainage, profile development, physical parameters and chemistry
- Identification of soil for use in reclamation
- Soil handling plan



### Vegetation

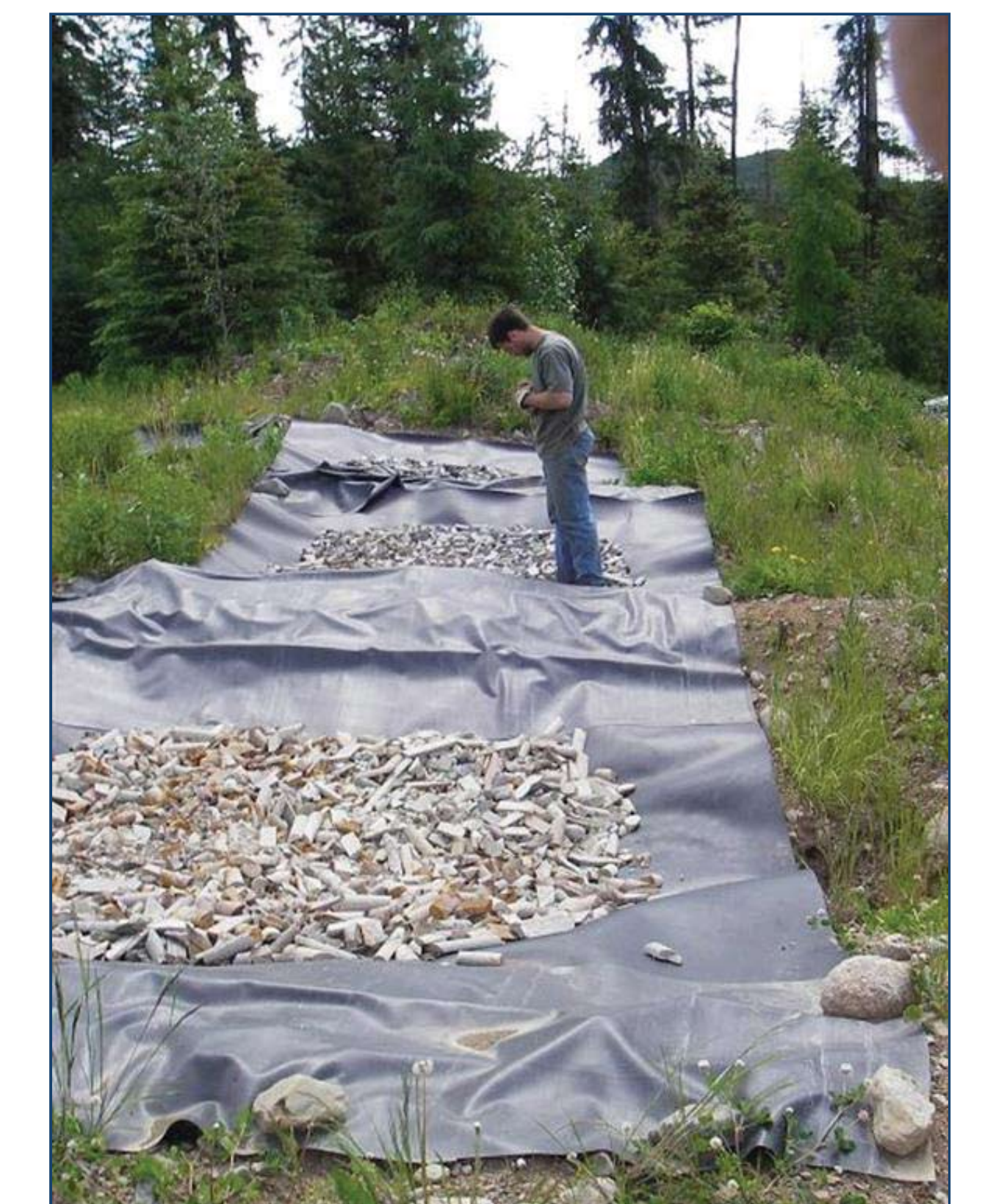
- Inventory conducted in Fall 2006
- Plot locations were selected based on terrain, vegetation, and wildlife habitat features
- Plant tissue samples collected for metals analysis
- Completion of field studies planned for 2007

### Wildlife and Wildlife Habitat Assessment

- Identify species at risk or of concern
- Wildlife habitat suitability mapping for selected species of interest
- Cliff and riparian dwelling raptor surveys through stand watch and call playback methodologies
- Forest and alpine breeding bird surveys with variable radius point counts
- Waterfowl surveys

### Geochemical Assessments

- Geochemical analysis of rocks, tailings and water
- Phased approach to assessment according to BC regulations
- Phase 1: ABA analyses to characterize rock types and tailings
- Phase 2: Humidity cells and leach pads to perform kinetic tests
- Phase 3: Analysis and Environmental Management Plan



### Aquatic Ecology and Fish

- Aquatic ecology program components include: water, sediment, periphyton, phytoplankton, zooplankton, benthic invertebrates and fish (community and habitat)
- Sampling sites included streams, ponds and lakes
- Surface water is influenced by climate, geology and past land uses
- Aquatic biology surveys are conducted to assess the health of the aquatic ecosystems in the Project Area
- Data collection to continue in 2007



# MORRISON PROJECT PACIFIC BOOKER MINERALS INC.

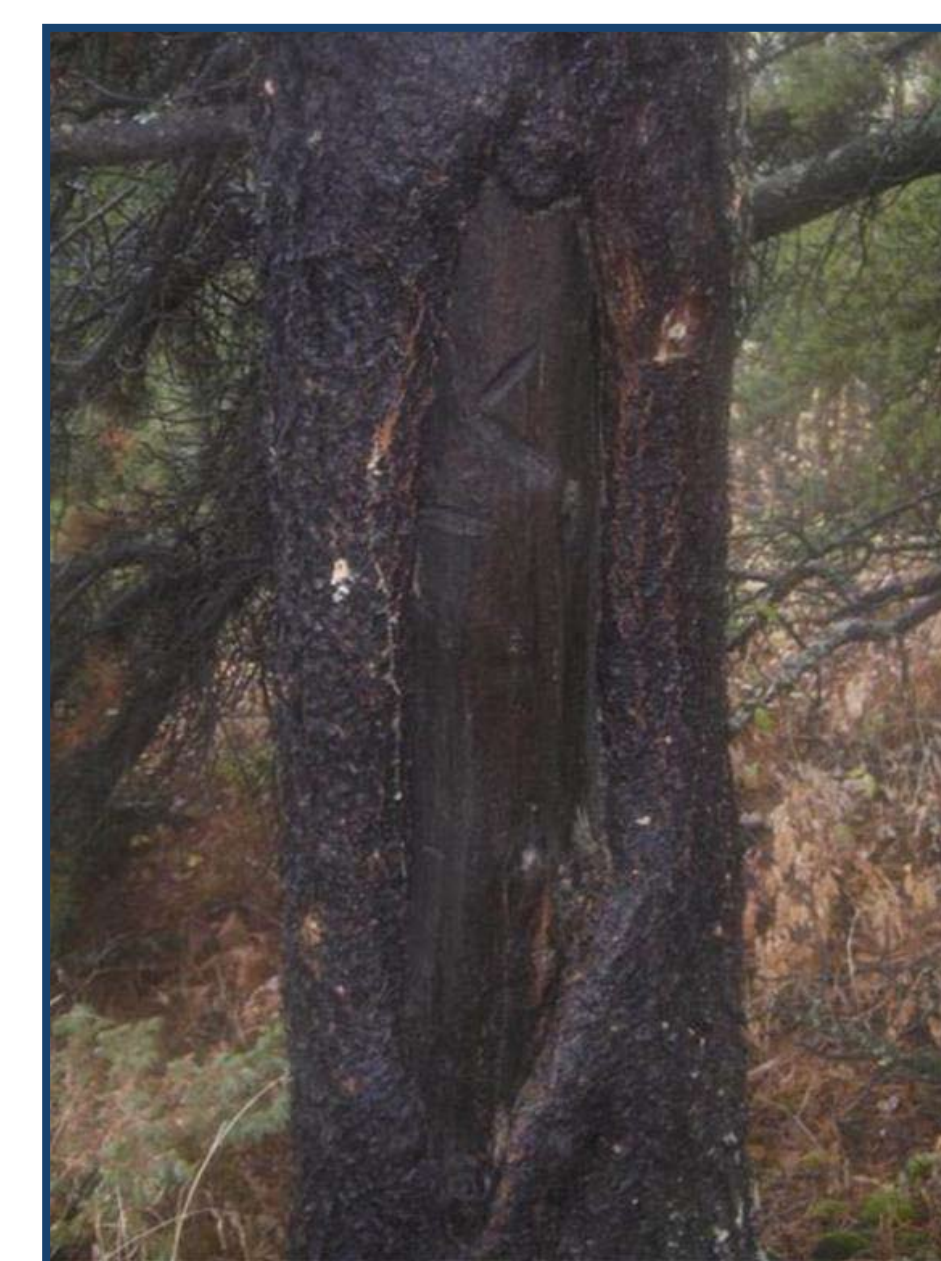
**British Columbia**



## Socio-Economic Baseline Programs

### Archaeology

- Identify and evaluate for any potential archaeological sites
- Research and Archaeological Overview Assessment
- Archaeological Impact Assessment as appropriate
- Traditional Knowledge and Traditional Use Studies
- Chance Find Recovery Procedures



### Socio-Economics

- Identification of study communities
- Population and demographics review
- Land use and official community plan review
- Local economic assessments
- Identification of employment and business development opportunities
- Regional labour market review
- Interviews, focus groups and surveys
- Social Impact Assessment

### Project Opportunities

- First Nations involvement with Pacific Booker Minerals
- Employment opportunities: Approximately 450 employees during construction phase & approximately 220 employees during operations phase
- Continued exploration may identify new mineable resources
- Contractor services opportunities including: Concentrate haulage, transportation, camp logistics and catering



# MORRISON PROJECT PACIFIC BOOKER MINERALS INC.

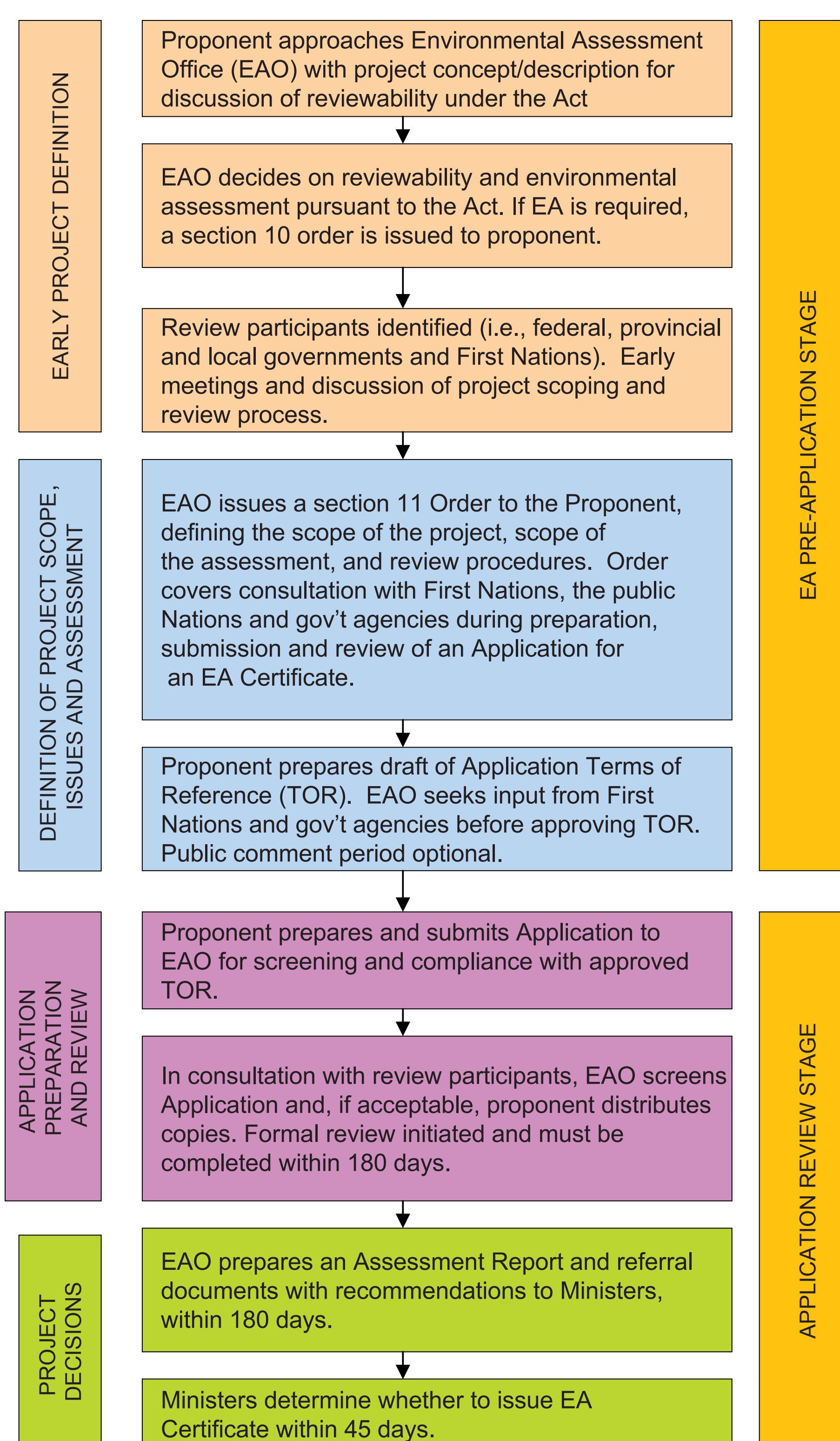
**British Columbia**



## Project Review Process and Consultations

### Morrison Project Review Process

- Project review subject to the *BC Environmental Assessment Act*
- BC Environmental Assessment Office coordinates review
- Project Terms of Reference being finalized
- Baseline study work underway to meet the Projects Terms of Reference
- Remaining studies underway: Archaeology, Socio-Economics, Meteorological, Soils, Metal Leaching-Acid Rock Drainage (ML-ARD), Public Health & Safety, and Corridors
- Efforts focused on key environmental components: Fish, ML-ARD, Wildlife, Water, First Nations Traditional Knowledge/Land Use, Waste Management
- Ongoing Environmental and Social baseline field studies
- Environmental Assessment Certificate (EAC) Application to be completed in 2007
- EAC Application review in 2008



### Public Engagement and Consultation

- Consultation with the Lake Babine Nation
- Mine site tours
- Public meetings and open house information sessions
- Direct community engagement
- Information Distribution
- Dialogue and Communication

### Consultation groups

- Lake Babine Nation
- Local communities and residents
- Stakeholders
- Service providers and businesses
- Environmental and special interest groups

